

Empower children in care through transformative and fun outdoor experience!



Team Leader Job Description:

Team leaders are responsible for leading your team of campers, implementing the core programs, creating a safe and fun environment, and providing individual care for each camper in a small group setting. Each team may have 5 - 10 campers for you to supervise, and ages can vary from 6 to 15.

Key Responsibilities:

- Prepare, guide, supervise and instruct during activities. Activities may include hiking, stream hike, cooking, crafts, etc.
- Support all aspects of operations to create a smooth-running and successful camp.
- Adhere to camp philosophy, standards, and goals.

Qualifications:

You must be:

- Over 18 years old
- Available for all training and all camp days (see detailed schedule below)
- Able to comfortably converse in both English and Japanese
- Hard-working, proactive, fun and energetic
- Patient, especially for the children
- Able to work as a member of a team

Helpful if you have (not required):

- Previous experience working with children in a camp environment
- Teaching or leadership experience in outdoor settings

NOTE: PLEASE BE AWARE THAT MANY OF THE CAMPERS COME FROM DIFFICULT BACKGROUNDS, AND SOME OF THEM HAVE DIFFICULTY OPENING UP TO NEW PEOPLE. HOWEVER, IF YOU HAVE INTEREST IN AND ENJOY WORKING WITH CHILDREN, AND COME WITH AN OPEN MIND, POSITIVE ATTITUDE, AND READY TO HAVE AN HONEST INTERACTION, THE CHILDREN WILL OPEN UP TO YOU.

2019 Schedule (may change depending on camp assignment)

- Mandatory Training (Miyagi onsite): July 26-28
- Camp session 1: July 29 – August 2
- Days off (unpaid) ONSITE: August 3 – 4
- Camp session 2: August 5 – August 9
- Days off (unpaid) ONSITE: August 10 – 11
- Camp session 3: August 12 – August 16



*Meeting time is 10am at Kurikoma Kogen station in Miyagi on Friday, July 26th.

*Dispersal time is 3pm at Kurikoma Kogen station on Friday, August 16th.

*Mirai no Mori will provide paid training on-site before camp. Attendance is mandatory. Our training is designed to help you to be a more effective camp team member and will make your experience much more enjoyable.

Compensation

1. Paid position (You must be eligible to work in Japan):

- Camp days: 10,000 JPY per day
- Training days: 5,000 JPY per day

*Mirai no Mori will provide food and accommodation during camp days.

*Days off at campsite (4 days in total) are NOT paid.

2. Volunteer position:

*Mirai no Mori will provide food and accommodation during camp days.

Transportation Reimbursement

We will reimburse your transportation cost from your closest station to the meeting point at Kurikoma-kogen Station. The reimbursement amount will be up to 40,000 JPY round trip. Please arrange your own transportation for you to come to our meeting point on time. To get your reimbursement, you will need to fill in "Transportation Record" sheet, and the payment will be made by September 20th.

*We can also arrange and purchase a return ticket for you for specific trains (set dates and times) from Tokyo to Kurikoma-kogen and back. These dates and times are set for you to get to the meeting point on time, and return on the last day of the camp. Your transportation reimbursement will be up to 15,000 JPY round trip, in this case. If you would like us to arrange and purchase the tickets, please let us know by June 20th.

Mirai no Mori videos

We recommend watching these videos before you apply, as these will give you a better idea on what the camp is like and what to expect:

Staff voices: <https://www.youtube.com/watch?v=oeXAJDQh1gA>

Camp tour: https://www.youtube.com/watch?v=_mc2E_O7ZPQ

Camper/care worker voices: https://www.youtube.com/watch?v=8uuX_2HHc2g

Timeline

February to the end of April:

Application period

May:

Interview period

End of May:

Official offers to be made

To Apply

Please apply using this online form:

<http://bit.ly/MM-Summer-Camp-2019-Application>

Thank you very much for your interest in joining the NPO Mirai no Mori Summer Camp team. We are looking forward to hearing from you.



MIRAI NO MORI SUMMER CAMP LIFE



01 CAMPSITE



We will have a campsite to ourselves, where we do most of the activities, such as cooking, crafts, marshmallow roasting, team building activities, etc.



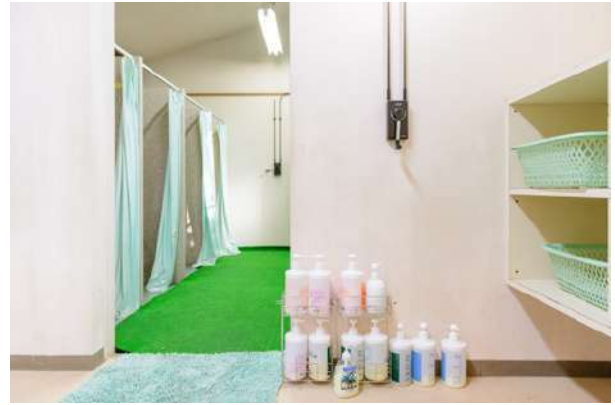
This is a building where our office, indoor play area, and camp supplies are held. You can come here to rest during your time off, charge any electronics, and do your laundry.



The kitchen is outdoors. All the staff and campers help out to prepare and clean up after each meal.



The bathroom is open-aired with few Japanese-style toilets and one western style toilet per side.



Showers are available on-site for all staff, careworkers, and campers. Staff is welcome to use them 24/7, while it is off-limits to campers except during their designated shower time. Shampoo and body soap provided by the campsite are also free to use.

02 ACCOMMODATION



All campers will be sleeping in tents. Careworkers and Mirai no Mori staff members, on the other hand, will be sleeping in either a tent or little cabin. Each option is large enough to accommodate up to three people and their luggage. You will not be sleeping with campers, but instead, you will be sharing it with 1-2 other staff members. The campsite will provide tents, sleeping bags, sleeping mats, and sheets.

03 FOOD



Breakfast and dinner are prepared at campsite kitchen by staff and campers. Lunch is either at a cafeteria or a Japanese style lunch box.

04 DAYS OFF

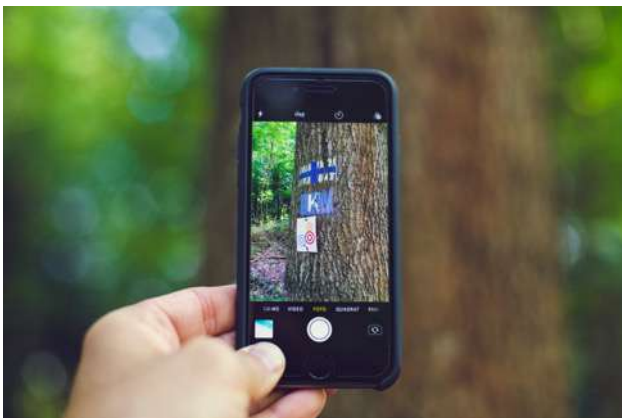


Weekends are yours to do with as you please: read, hike, take a nap, explore the surrounding areas, etc. We also plan to visit a nearby children's home during days off, if you wish to partake in that.

We usually make a grocery run to the closest supermarket on Saturdays, so if you have any food, drink, or snack requests, we will gladly pick them up for you (or join the trip). You are more than welcome to use the kitchen on the weekends, or you are also welcome to order a lunch from the cafeteria.

If you wish to leave the campsite during your time off, the closest station from the campsite is about a 1-hour drive, and Mirai no Mori will provide you the shuttle to the station once a day when requested and possible.

05 OTHER



Phones do NOT have a stable reception, and Wi-Fi will be available in the office, even though it's not stable enough to serve multiple devices. Free Wi-Fi is available in the main campground building, away from the campsite, but you will only be able to use it during your time off.



Laundry: The washing machine is available anytime supplied with laundry detergent for staff.

06 SAMPLE CAMP ACTIVITIES



ORIENTATION: Campers meet their team leaders for the first time.



TEAM FIRE: Teams roast marshmallows and sing songs to build team spirit.



HIKING: Campers embark on their first adventure into the woods.



CRAFT: Campers get creative while learning to craft with nature.



STREAM HIKE: Campers take the skills they have learned and try to conquer their fears hiking to a waterfall.



CAMP FIRE: Everyone shares one final evening together, singing songs and sharing memories from camp.

Everyone at Mirai no Mori is really looking forward to creating another MAGICAL camp experience with you all!

Apply Today!

<http://bit.ly/MM-Summer-Camp-2019-Application>